



# **IFPTE - Local 21**

## **Santa Clara County**

### **Engineers and Architects Association**

675 NORTH FIRST STREET, STE 715, SAN JOSE, CA 95111

Nancy Ostrowski, Senior Labor Representative, (408) 291-2200, [nostrowski@ifpte21.org](mailto:nostrowski@ifpte21.org)

## **WHO WE ARE**

**We are Engineers, Architects, Project Managers, Engineering Geologist, Environmental, Health, and Safety Professionals.**

## **WHAT WE DO**

**We provide engineering, architectural, geological & geotechnical, project management, permitting, environmental, health, and safety services to all County owned and/or operated facilities, to the public, to public agencies, and to regulatory agencies.**

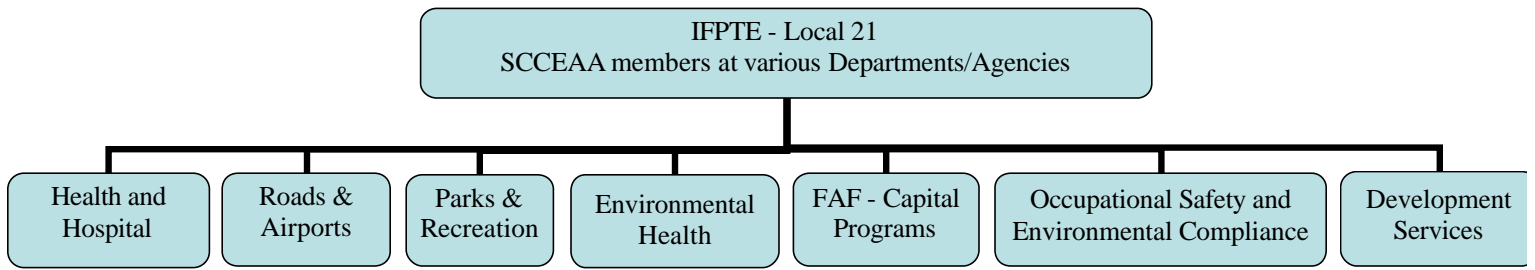
**Civil Engineers** are responsible for the design, contract administration, construction, operation, and maintenance of the County Expressway system, unincorporated roadways, bridges, signalized intersections, street lights, signs, and County Airports projects.

**Plan Check Engineers** review and approve private improvement and subdivision development plans to make sure that County Ordinance is met, helping to ensure public health and safety are met.

**Engineering Geologist** is responsible for reviewing and approving all subdivision and building plans for geological and geotechnical conditions to ensure public safety.

**Capital Project Managers (Engineers and Architects)** provide project management on Capital Improvement Projects to County owned and/or operated facilities. Facilities such as the Hospitals, Clinics, Courthouses, Jails, Crime Lab, Pharmacy, County Parks, etc.

**Environmental, Health, and Safety Professionals** ensure compliance with regulatory standards, promote safe work practices and enhance public safety at County facilities, provide accident prevention services to minimize County workforce injuries and illnesses, monitor and ensure appropriate hazardous materials storage, use, and disposition, and respond to environmental and health & safety emergencies.



## Our members' County projects:

