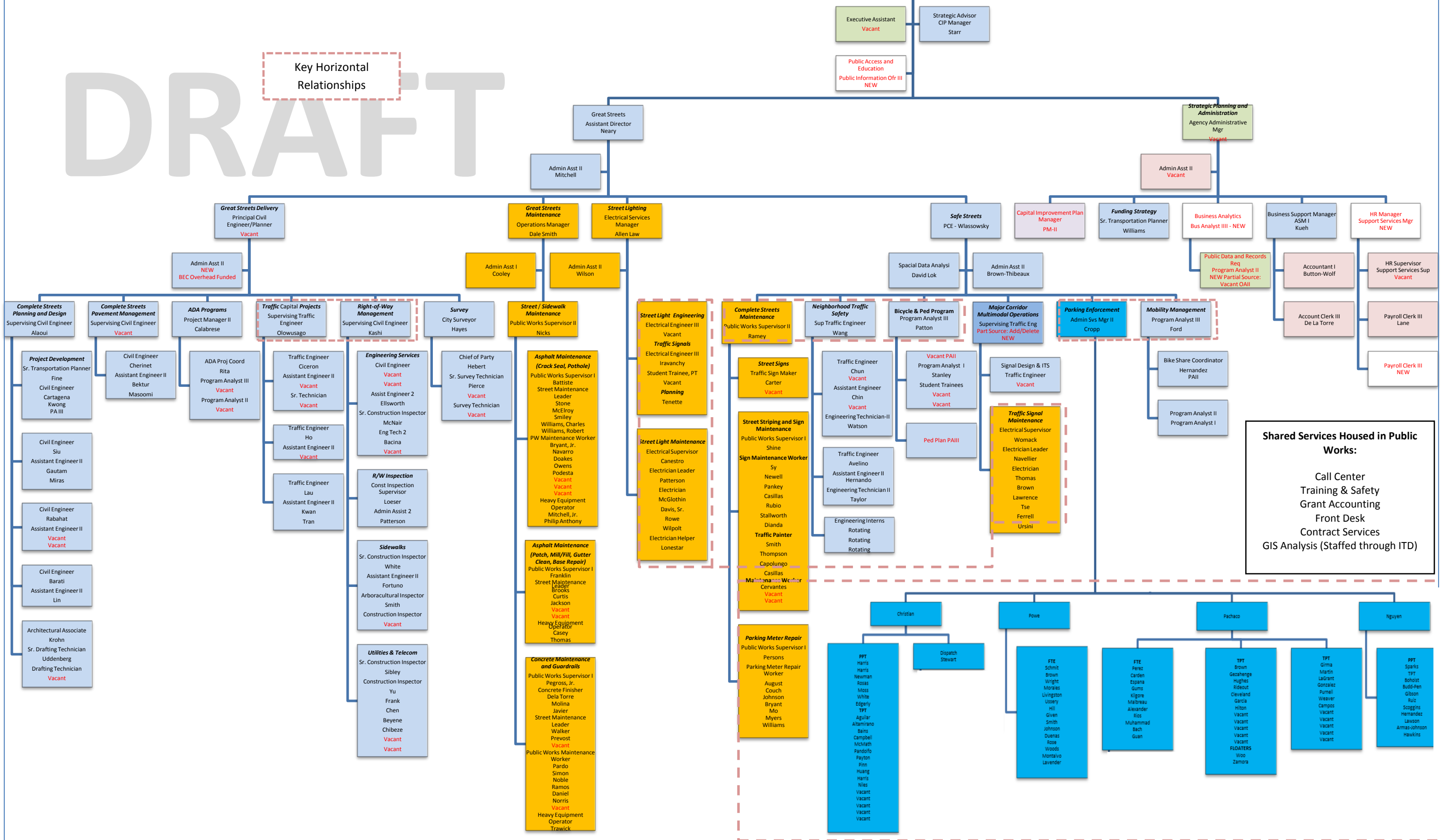


OAKLAND DEPARTMENT OF TRANSPORTATION – DRAFT ORGANIZATION CHART 10/17/2016

DRAFT

Key Horizontal Relationships

- Existing position currently in IT To be shared with OPW
- Existing position Currently in BEC
- Existing Position Currently in BIO
- Existing Position Currently in OPW Admin
- Existing position Currently in OPD
- New Position Funded through vacant Traffic Engineer Delete And projects
- New Position Funded through overhead Or Zero Base Budget
- New Position Project Funded
- New Position Funded with DOT Initial funding from Council
- Department of Transportation Director Tumlin - Interim



Shared Services Housed in Public Works:

- Call Center
- Training & Safety
- Grant Accounting
- Front Desk
- Contract Services
- GIS Analysis (Staffed through ITD)